



# NORTH SCOTTSDALE ENDODONTICS & IMPLANTOLOGY

8765 E. Bell Road  
Suite 213  
Scottsdale, AZ  
85260  
Phone 480-731-3636  
Fax 480-731-3637  
www.nsendodontics.com

## Inside this issue:

- AAE Survey results of 983 General Dentists 2
- Wedding in the Works 2
- "Just Dam It" 3
- Quotables 3
- Blueberry Maple Breakfast Bake Recipe 3
- We Take Customer Service Seriously! 4
- Governor Signs Non-Covered Services Bill 4

Volume 2, Issue 2

May/June 2010

## Why Cone Beam 3D Technology?

There are many advantages and uses for Cone Beam technology in dental diagnosis and treatment planning.

### Clinical Case:

Patient presented with a previously treated upper left first permanent molar. The tooth had been treated endodontically approximately twelve years previously but the patient had never been pain free in the maxillary left quadrant. (Figure 1).

The patient was given treatment options and did not elect to have treatment at that time but returned approximately fourteen months later. An updated periapical digital image was taken at that time. (Figure 2).

For the first examination consultation appointment we did not have 3D imaging technology in place. At the time of the second consultation the cone beam system had been installed and we were using it regularly and beginning to find it especially useful in endodontic

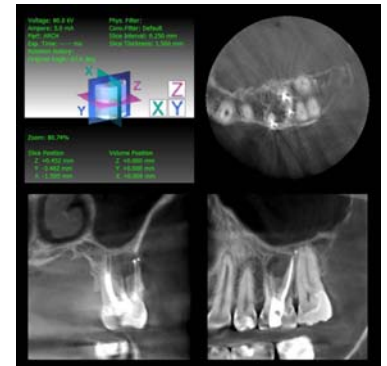
retreatment cases. A panoramic and 3D image were taken. (Figure 3). A single slice of one of the 3D images shows a significant lesion of endodontic origin in each plane of section axial, coronal, and sagittal. What appears to be vague on a digital periapical image is clearly significant with 3D imaging technology. The advantages of using 3D imaging technology for endodontic diagnosis cannot and should not be overlooked.



(Figure 2) Digital image taken 3/26/09



(Figure 1) Digital image taken 5/6/08



(Figure 3) Cone Beam slice clearly shows significant lesion.

## Join Us For Lunch N Learn!

**COME HAVE LUNCH  
WITH US!**

**We would like to share  
the technological advances in radiology for  
patient diagnosis and  
treatment planning!**

**Call to schedule  
lunch with us!**





“The survey emphasized the importance of frequent, personal interaction and communication between general dentists and endodontists”

“The AAE is dedicated to excellence in the art and science of endodontics and to the highest standard of patient care.”

### AAE Helping General Dentists and Endodontists Continue to Build Stronger Ties

#### Survey Reveals Keys to Successful Partnership

CHICAGO – The American Association of Endodontists (AAE) recognizes the important partnership endodontists and dentists share in the dental care paradigm. The AAE recently surveyed 983 general dentists and is utilizing the findings to highlight ways endodontists and general dentists can best work together for the benefit of root canal patients. According to the survey, more than 94 percent of general dentists say the two most effective ways endodontists build relationships with them occur following a root canal procedure, when endodontists promptly send reports and film back to the general dentist and refer patients back to the dentist for restorative treatment. Dentists who refer patients to a specialist want to ensure they consistently stay informed of their patients’ condition, and are prepared to perform the necessary follow-up care. A majority of dentists also say their best endodontist partners accommodate emergencies into their schedule (92 percent), are available for second opinions (90 percent) and collaborate on a treatment plan for referred patients (86 percent).

Dr. Glickman reported, “Many things dentists cited in the survey are simple steps many endodontists already are doing. But with more than 15 million root canals performed in the U.S. every year, dental practices, along with their patients, could benefit from even greater collaboration with endodontists.” The survey emphasized the importance of frequent, personal interaction and communication between general dentists and endo-

dontists, and it reiterated the results of an earlier AAE study that showed general dentists find value in the services endodontists provide to their patients. Eighty-seven (87) percent of dentists said the work an endodontist performs is “worth the cost,” while just 35 percent of dentists believe they can do many of the same procedures as endodontists (and just as well) for less cost. The vast majority (93 percent) of dentists see endodontists as

partners in delivering quality dental care.

#### About the American Association of Endodontists

The AAE, headquartered in Chicago, Ill., represents more than 7,200 members worldwide, including about 95 % of all eligible endodontists in the United States. The Association, founded in 1943, is dedicated to excellence in the art and science of endodontics and to the highest standard of patient care. The Association inspires its members to pursue professional advancement and personal fulfillment through education, research, advocacy, leadership, communication and service.

### Hollie is Planning a Wedding !!

My fiancé Johnny and I met each other on December 15th, 2007. At that time he was living in Arizona. When I realized our relationship was special I made the move from California in April 2008.

We are now working on year three and we have decided to tie the knot! The wedding plans are pretty stressful, but coming along nonetheless. We have chosen to have the wedding in Las

Vegas at a place called The Grove. The wedding date is on September 25th, 2010. It will be a small outdoor ceremony with about 50 guests expected to attend. We are very excited to share our news and can’t wait for our special day to arrive!



## JUST DAM IT!

The Dental Dam or Rubber Dam is an imperative part of root canal therapy that makes treatment so simple, yet has a reputation of being cumbersome and difficult to place. While commonly thought of as just a convenience device for dental treatment, the rubber dam is a requisite component of Endodontic Therapy.

The etiology of Endodontic Infection is bacterial contamination of the root canal system and surrounding tissues. Saliva is full of these bacteria and when they gain access into the teeth and gums, dental infections occur. It is critical that, during Root Canal Therapy, all efforts are made not to contaminate the working field, access cavity and canal system with saliva. Even one drop of saliva in an endodontic access is enough to inoculate a root canal system with bacteria, which will result in future infection! This is also true when doing a coronal seal build-up of an endodontic access cavity. Just one drop of saliva will contaminate a clean and sealed root canal system. Gutta Percha has no sealing qualities to prevent bacterial contamination; the coronal seal build-up serves that purpose. The only way to prevent contamination of the root canal system is through the use of a rubber dam whose primary purpose is preventing the oral fluids from entering the working field.

Other benefits of rubber dam placement include patient safety to prevent aspiration or swallowing of instruments or irrigants and to aid in the retraction of the oral soft tissues during treatment. Placement of a rubber dam is very simple and takes only a moment when practiced and used routinely. There are some difficult teeth to isolate, but there are also ways to make isolation of those teeth simple. Having a variety of clamp sizes and shapes will facilitate dam placement for those difficult teeth. Some adjunct products, such as OpalDam or OraSeal, will also help to seal leakage spots. It is also helpful to use elastic wires like wedjets to retain the dam when a clamp hinders treatment or to anchor the dam mesially for quadrant isolation. We are happy to provide input or advice for isolating those tricky teeth at any time. An Italian Endodontist, Arnaldo Castellucci states in his textbook "the only tooth that may be treated without the rubber dam is the tooth that is so severely damaged that the only instruments to be used are the extraction forceps." Please contact our office if you have any questions about rubber dam isolation or want more information.

## When Does the Learning End for the Professional ?

*"The important thing is not to stop questioning. Curiosity has its own reason for existing. One cannot help but be in awe when he contemplates the mysteries of eternity, of life, of the marvelous structure of reality. It is enough if one tries merely to comprehend a little of this mystery every day. Never lose a holy curiosity."*  
**Albert Einstein**

*"The professional dentist has no other right other than being a continuous student"*  
**G.V. Black**

*"The friendships of those we serve is the foundation of our progress."*

Studies have shown your income and wealth are directly related to the size and depth of your vocabulary.  
**Taken from The Connection**

### Healthy Ideas

Endodontists have long led the dental profession in the adoption of new technologies. According to a survey by Dental Products Report, 48 percent of them have already replaced conventional X-rays with digital radiography equipment. For more information, visit [www.rootcanalspecialists.org](http://www.rootcanalspecialists.org).

**"Live like you are going to die tomorrow. Learn like you are going to live forever."**  
**Gandhi**

## Try This Yummy Recipe for Your Next Brunch

### Blueberry Maple Breakfast Bake



Preparation time: 15 minutes to prepare, 1 hour to cook. If using frozen blueberries, defrost and drain first.

### Ingredients

- 1 loaf of white bread, crusts removed, bread cut into 1-inch pieces
- 4 oz cream cheese, cut into small cubes (about 1 cup)
- 2 cups fresh or frozen blueberries, divided
- 8 eggs, beaten
- 1 1/2 cups milk
- 1/4 cup melted butter
- 1/4 cup maple syrup plus more for serving

### Method

- 1 Preheat oven to 350° F. Grease an 8 or 9-inch square baking dish. Place half of the bread cubes in the dish. Sprinkle cream cheese cubes and half of the blueberries over the bread. Top with remaining bread cubes and blueberries.
- 2 Combine eggs, milk, maple syrup and butter in a large

*Continued next page*



### Benefits of Blueberries -

- Neutralizes free radicals
- Aid in reducing belly fat
- Helps promote urinary tract health
- Been proven to preserve vision
- Brain health
- Heart health
- Digestion & Constipation
- Cancer

**NORTH  
SCOTTSDALE  
ENDODONTICS &  
IMPLANTOLOGY**

**8765 E. Bell Rd.,  
Ste# 213  
Scottsdale, AZ  
85260**

**Phone: 480-731-3636  
Fax: 480-731-3637**

**Staff E-mail Addresses:**

**Dr. McClammy  
drmcclammy@nsendodontics.com  
Dr. Palermo  
drpalermo@nsendodontics.com  
Christine  
Christine@nsendodontics.com  
Shelley  
Shelley@nsendodontics.com  
Hollie  
Hollie@nsendodontics.com  
Amanda  
Amanda@nsendodontics.com**

**Check us out at  
[www.nsendodontics.com](http://www.nsendodontics.com)**

**The Staff at North Scottsdale Endodontics & Implantology**

**We are  
ready to  
serve  
your  
Patients!**



**We Take Customer Service Seriously!**

**In our office we work hard together to provide excellent customer service to our patients** and find what they need and want from our team, so we can exceed their expectations and enhance their treatment experience. The only way we can know for sure patients are happy with our practice is to ask them. By surveying our patients we can identify areas where we excel and areas to improve.

Each time our patients complete treatment, a survey letter is sent in the mail to them with a self-addressed stamped envelope. The survey is one page in length and consists of questions pertaining to their experience during treatment, discomfort level after treatment, and overall impression of the office and staff.

During our monthly team meeting we review the surveys and follow-up on any negative responses. Next, the patient is called letting them know that we appreciate their input and that the concern is being addressed. We are pleased to say that most of our surveys are very positive, but we learn and grow the most from the negative ones! If you would like a copy of our survey please call our office and we will make sure you get one.

*Recipe Continued:*

bowl and pour over bread mixture.  
**3** Bake until a knife inserted in the center comes out clean, about 1 hour. Cover with aluminum foil if you notice the edges browning too much during baking.  
**4** Let stand for 10 minutes before serving. Cut into squares to serve. Serve with additional maple syrup. Can be prepared the night before, and baked before serving.  
Makes **9** servings.



**ENJOY!**

**Governor Signs Non-Covered Services Bill, AP Hygiene Changes Included**

The Arizona Dental Association's initiative (Senate Bill 1419) to prohibit State-regulated dental insurance carriers from requiring dentists to provide services to an individual covered under the plan based on a fee set by the insurance carrier unless it is a "covered service" was signed by Governor Jan Brewer on Monday, April 26. The new law is limited to contracts entered into or renewed after January 1, 2011.

Arizona's law only covers State regulated dental insurance carriers. ADA is supporting legislation in the U.S. Congress (HR 5000) to prohibit this practice by ERISA regulated dental benefit plans. Arizona becomes the 10th State in the Nation to adopt a law on non covered services. Legislation is now pending in 18 other states.